



# GigaVUE-OS Installation Guide for DELL S4112F-ON

**GigaVUE-OS**

Product Version: 5.10

Document Version: 1.0

(See Change Notes for document updates.)

**Copyright 2020 Gigamon Inc.. All rights reserved.**

Information in this document is subject to change without notice. The software described in this document is furnished under a license agreement or nondisclosure agreement. No part of this publication may be reproduced, transcribed, translated into any language, stored in a retrieval system, or transmitted in any form or any means without the written permission of Gigamon Inc..

**Trademark Attributions**

Copyright © 2020 Gigamon Inc. All rights reserved. Gigamon and the Gigamon logo are trademarks of Gigamon in the United States and/or other countries. Gigamon trademarks can be found at [www.gigamon.com/legal-trademarks](http://www.gigamon.com/legal-trademarks). All other trademarks are the trademarks of their respective owners.

Gigamon Inc.  
3300 Olcott Street  
Santa Clara, CA 95054  
408.831.4000

# Change Notes

When a document is updated, the document version number on the cover page will indicate a new version and will provide a link to this Change Notes table, which will describe the updates.

Product Version	Document Version	Date Updated	Change Notes
5.10.00	1.0	08/14/2020	Original release of this document with 5.10.00 GA.

# Contents

- GigaVUE-OS Installation Guide for DELL S4112F-ON** ..... **1**
  - Change Notes ..... 3
- GigaVUE-OS on Dell S4112F-ON** ..... **2**
  - Dell S4112F-ON Features ..... 2
- Prerequisites** ..... **3**
  - License ..... 3
- GigaVUE-OS Installation** ..... **4**
  - Uninstall third party OS from DELL S4112F-ON ..... 4
  - Install GigaVUE-OS in DELL S4112F-ON using ONIE Discovery ..... 6
- Configuration Using CLI (Command Line Interface)** ..... **9**
  - Device Configuration Commands ..... 11
  - License Installation Commands ..... 11
  - Device Show Commands (Traffic) ..... 12
  - Device Status Show Commands (Environment) ..... 12
- Configuration Using H-VUE** ..... **13**
- Supported Devices** ..... **15**
- Supported Functionality** ..... **16**
- Limitations** ..... **18**
- Troubleshoot Dell S4112F-ON Issues** ..... **18**
  - DELL S4112F-ON enters GRUB Rescue Mode ..... 18
  - DELL S4112F-ON prevented from booting the GigaVUE-OS Image ..... 20
  - Additional Sources of Information ..... 22
    - Documentation ..... 22
    - Documentation Feedback ..... 25
    - Contact Technical Support ..... 25
    - Contact Sales ..... 25
    - The Gigamon Community ..... 26

# GigaVUE-OS on Dell S4112F-ON

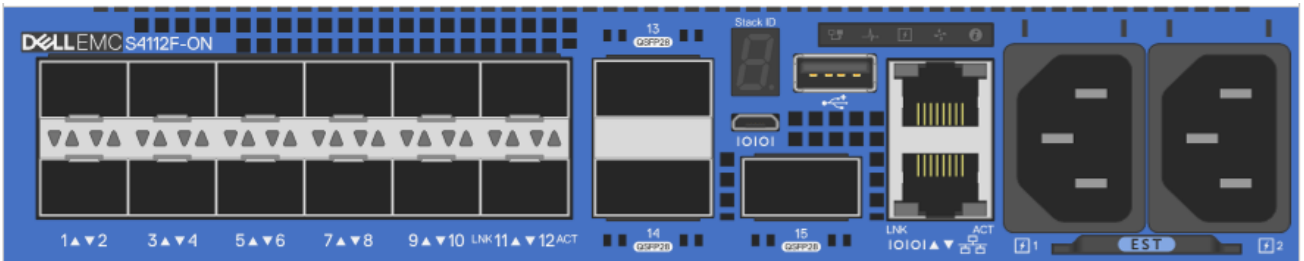
GigaVUE-OS is now accessible on Dell S4112F-ON provided that the required license is installed. This enables DELL S4112F-ON to integrate with GigaVUE-FM, supports CLI- command-based configurations and is in par with the available features and functionalities of GigaVUE TA Series platform.

**NOTE:** DELL S4112F-ON is also referred to as DELL 12 port switch .

## Dell S4112F-ON Features

Dell S4112F-ON is a half rack unit switch with the following features:

- One management port and serial console
- Two PSU (power supply units) in the front side of the platform
- Three integrated fans at the rear side of the platform
- 12 x10G and 3 x100G native port cages supporting a 1G-100G range of speed: 1G, 10G, 40G, and 100G.
- A 4x10G breakout is possible when a 40G optic is plugged into any one or all three 100G port cages.



**NOTE:** All features and functionalities available in Gigamon platforms are subject to licensing and hardware conditions.

# Prerequisites

To install GigaVUE-OS and access the features, the following prerequisites is mandatory :

- [License](#)

## License

Ensure that you have purchased and installed the license before accessing your platform with GigaVUE-OS. The license key for each DELL S4112F-ON platform accessing GigaVUE-OS is unique and is generated based on the individual chassis serial number. After you install the license it activates your configured ports and provides access to most of the features and functionalities that can be accessed from GigaVUE-OS. An additional license is required to enable cluster ,L2GRE, VXLAN and circuit tunnel functionality.

Please contact support team for respective license keys.

# GigaVUE-OS Installation

After powering on the S4112F-ON switch, it goes through a power-on self-test (POST). After the POST, the switch uses GRUB bootloader to access the operating system (OS). Use the up and down arrow keys on your keyboard to select an entry. For more information about using GRUB, refer to the GNU GRUB documentation.

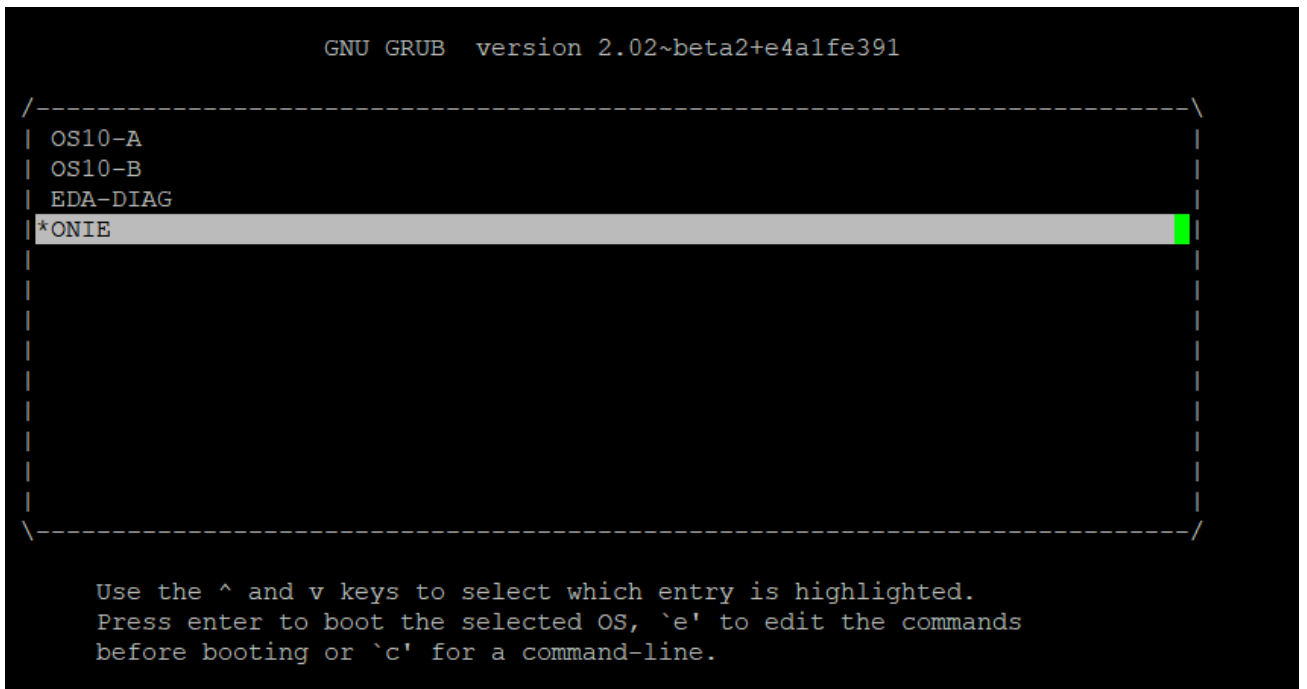
**NOTE:** Before installing GigaVUE-OS, you must uninstall any pre-installed third party OS in the switch. You must uninstall any pre-installed OS in the Dell S4112F-ON switch before installing GigaVUE-OS. For example, if it is preloaded with Dell's Operating System (OS), it will prompt you to log in after you power-on, as shown below. To uninstall the previous OS, refer to [Uninstall OS in DELL S4112F-ON](#).

```
Connected to port 44.  
Debian GNU/Linux 9 OS10 ttyS0  
Dell EMC Networking Operating System (OS10)  
OS10 login: █
```

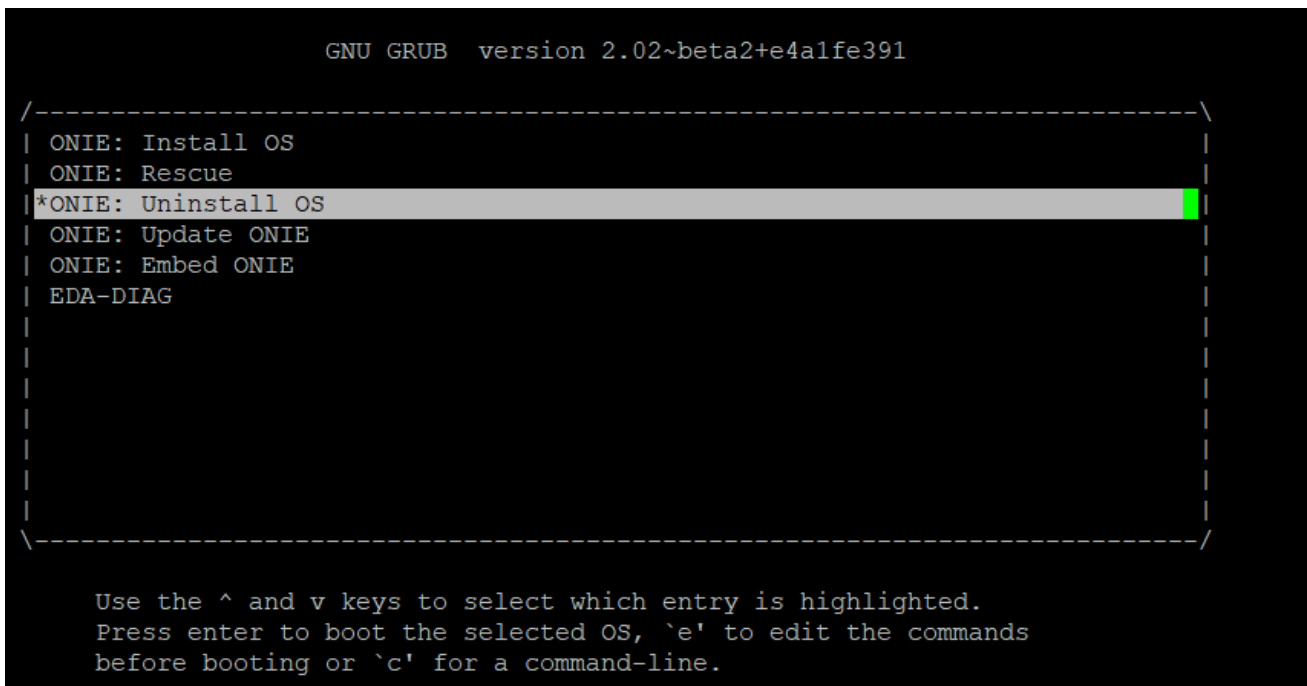
## Uninstall third party OS from DELL S4112F-ON

To uninstall an existing third party operating system follow below instructions:

1. Power cycle the device and select "ONIE" from the GRUB menu .



2. Select "ONIE: Uninstall OS" option and press ENTER . The system will start uninstalling the DELL image and perform a reboot once completed.



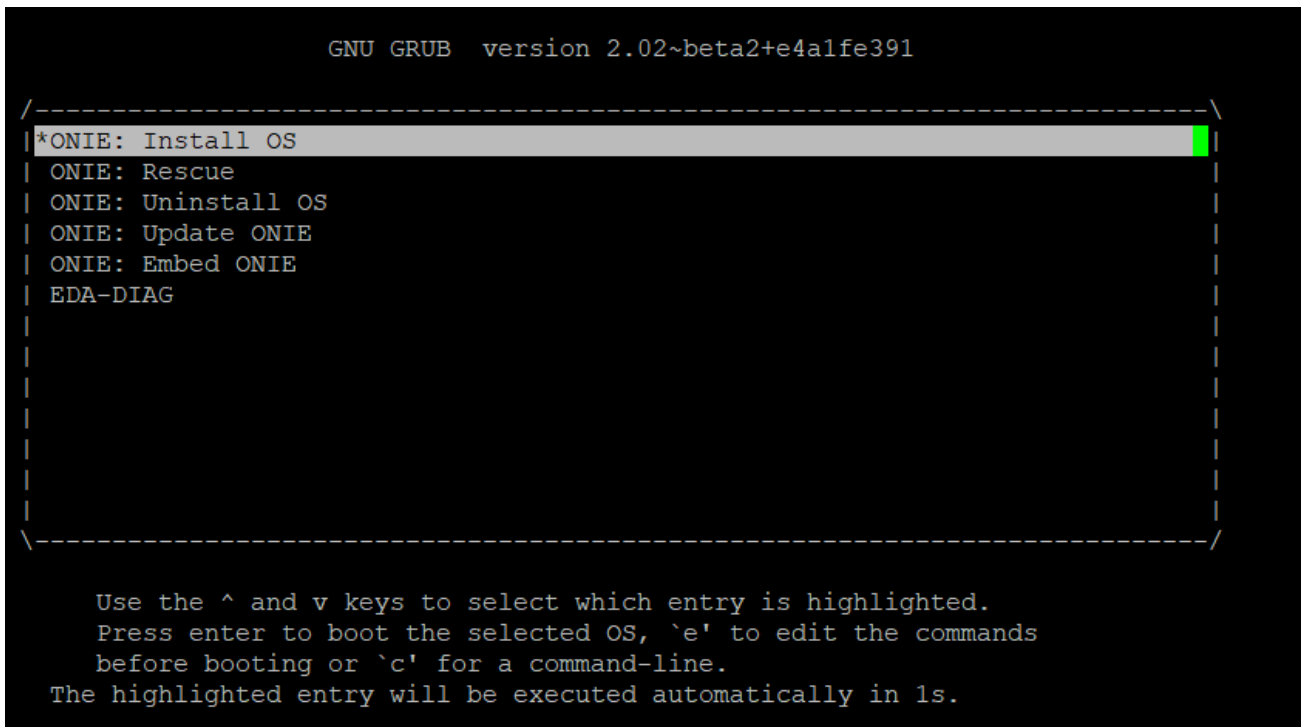


# Install GigaVUE-OS in DELL S4112F-ON using ONIE Discovery

ONIE Discovery can utilize multiple methods to discover the possible operating system. Refer to *S4112-ON Series Installation Guide* for details.

Installing GigaVUE-OS in DELL S4112F-ON using ONIE discovery:

1. Power cycle the device.
2. Select the "ONIE: Install OS" option from the GNU GRUB Menu and press ENTER.



3. The DHCP will assign an IP address to the device. Once it does, press ENTER.

```

Info: eth0: Checking link... up.
Info: Trying DHCPv4 on interface: eth0
ONIE: Using DHCPv4 addr: eth0: 10.115.31.80 / 255.255.248.0
Info: eth1: Checking link... down.
ONIE: eth1: link down. Skipping configuration.
ONIE: Failed to configure eth1 interface
Starting: dropbear ssh daemon... done.
Starting: telnetd... done.
discover: installer mode detected. Running installer.
Starting: discover... done.

Please press Enter to activate this console. Info: eth0: Checking link... up.
Info: Trying DHCPv4 on interface: eth0
ONIE: Using DHCPv4 addr: eth0: 10.115.31.80 / 255.255.248.0
Info: eth1: Checking link... down.
ONIE: eth1: link down. Skipping configuration.
ONIE: Failed to configure eth1 interface
ONIE: Starting ONIE Service Discovery

To check the install status inspect /var/log/onie.log.
Try this: tail -f /var/log/onie.log

** Installer Mode Enabled **

```

4. After your installer is successfully discovered and installed, you can disable the ONIE discovery using the `onie-discovery-stop` command.

```

ONIE:/ #
ONIE:/ # onie-discovery-stop
discover: installer mode detected.
Stopping: discover... done.

```

5. You can manually install the operating system by one of the following methods:

**To load the GigaVUE-OS image from TFTP Server:**

- Install the image directly using the following command from "ONIE:/ prompt"

```

ONIE:/ # onie-nos-install https://tftpserver.com:/image_path/image-GigaVUE-OS-x86_64-
gvd4112-20200525-181004.img

```

**To load the GigaVUE-OS image using SCP Server:**

- Copy the image into temporary directory (`/tmp`) from the ONIE prompt:<sup>1</sup>

```

ONIE:/ # scp user@scpserver.com:/image_path/image-GigaVUE-OS-x86_64-gvd4112-20200525-
181004.img /tmp

```

---

1

- Install the image using the below command from "ONIE:/ prompt".

```
ONIE:/ #onie-nos-install <image_path>/<image_name>
```

For Example:

```
ONIE:/ # onie-nos-install /tmp/image-GigaVUE-OS-x86_64-gvd4112-20200525-181004.img
```

```
ONIE:/ # onie-nos-install /tmp/image-GigaVUE-OS-x86_64-gvd4112-20200421-120459.img
discover: installer mode detected.
Stopping: discover... done.
ONIE: Executing installer: /tmp/image-GigaVUE-OS-x86_64-gvd4112-20200421-120459.img
Verifying image checksum ... OK.
Preparing image archive ... OK.
Installing GIGAMON OS in ONIE
```

# Configuration Using CLI (Command Line Interface)

When the installation is complete, the system will automatically reboot and prompt you to log in to the GigaVUE-OS image.

```
Running system image: GigaVUE-OS 5.10.00 Build 200015 Debug 2020-07-23 08:38:57 x86_64 gvd4112 root@jenkins-slave373:git:db49b8411f2
SW integrity test successful.
Applying initial configuration:

3.33.0.1-7
Starting Redis server...
982:C 27 Jul 2020 14:09:20.100 # o00o00o0o0o0o Redis is starting o00o00o0o0o0o
982:C 27 Jul 2020 14:09:20.100 # Redis version=5.0.5, bits=64, commit=aa2b4009, modified=0, pid=982, just started
982:C 27 Jul 2020 14:09:20.100 # Configuration loaded
Starting Redis server...
991:C 27 Jul 2020 14:09:20.125 # o00o00o0o0o0o Redis is starting o00o00o0o0o0o
991:C 27 Jul 2020 14:09:20.125 # Redis version=5.0.5, bits=64, commit=aa2b4009, modified=0, pid=991, just started
991:C 27 Jul 2020 14:09:20.125 # Configuration loaded
Starting Redis server...
999:C 27 Jul 2020 14:09:20.146 # o00o00o0o0o0o Redis is starting o00o00o0o0o0o
999:C 27 Jul 2020 14:09:20.146 # Redis version=5.0.5, bits=64, commit=aa2b4009, modified=0, pid=999, just started
999:C 27 Jul 2020 14:09:20.147 # Configuration loaded
Starting pm: [ OK ]

Gigamon GigaVUE-OS
gigamon-d9fa45 login: █
```

1. Log in and proceed with the default configuration wizard as shown below:

```
GigaVUE-OS configuration wizard

Do you want to use the wizard for initial configuration? yes

Step 1: Hostname? [gigamon-d9fa45] DELL-S4112F-ON
Step 2: Management Interface <eth0> ? [eth0]
Step 3: Use DHCP on eth0 interface? [yes]
Step 4: Enable IPv6? [yes]
Step 5: Enable IPv6 autoconfig (SLAAC) on eth0 interface? [no]
Step 6: Enable DHCPv6 on eth0 interface? [yes]
Step 7: Enable SNMP communities? [no]
Step 8: Enable secure cryptography? [no]
Step 9: Minimum password length? [8]
Step 10: Admin password (Enter to leave unchanged)?
Step 11: Cluster enable? [no]
Step 12: Box-id for the chassis? [1]

You have entered the following information:

  1. Hostname: DELL-S4112F-ON
  2. Management Interface <eth0> : eth0
  3. Use DHCP on eth0 interface: yes
  4. Enable IPv6: yes
  5. Enable IPv6 autoconfig (SLAAC) on eth0 interface: no
  6. Enable DHCPv6 on eth0 interface: yes
  7. Enable SNMP communities: no
  8. Enable secure cryptography: no
  9. Minimum password length: 8
 10. Admin password (Enter to leave unchanged): (unchanged)
 11. Cluster enable: no
 12. Box-id for the chassis: 1

To change an answer, enter the step number to return to.
Otherwise hit <enter> to save changes and exit.

Choice:

Configuration saved to database 'initial'

Configuration changes saved.

To return to the wizard from the CLI, enter the "configuration jump-start"
command from configure mode.  Launching CLI...

Software Version: GigaVUE-OS 5.10.00 200015 Debug 2020-07-23 08:38:57
System in classic mode.
DELL-S4112F-ON > █
```

2. When you are done, your entries will be played back to you.

```
You have entered the following information:

1. Hostname: DELL-S4112F-ON
2. Management Interface <eth0> : eth0
3. Use DHCP on eth0 interface: yes
4. Enable IPv6: yes
5. Enable IPv6 autoconfig (SLAAC) on eth0 interface: no
6. Enable DHCPv6 on eth0 interface: yes
7. Enable SNMP communities: no
8. Enable secure cryptography: no
9. Minimum password length: 8
10. Admin password (Enter to leave unchanged): (unchanged)
11. Box-id for the chassis: 1

To change an answer, enter the step number to return to.
Otherwise hit <enter> to save changes and exit.

Choice:

Configuration saved to database 'initial'
```

3. Enter the step number to revise an entry or press **Enter** to save the configuration and exit.

## Device Configuration Commands

Use these CLI commands to configure a DELL S4112F-ON platform:

```
DELL-S4112F-ON # configure terminal
DELL-S4112F-ON (config) # chassis box-id 1
DELL-S4112F-ON (config) # card slot 1
DELL-S4112F-ON (config) # port 1/1/x1 params admin enable
```

**NOTE:** You will need licenses to enable the ports and the admin user role. Refer to the [Prerequisites](#) section. The command `(config) #chassis box-id 1` is not required if you are using the configuration wizard.

## License Installation Commands

Use these commands to install the license from CLI or GigaVUE-FM:

```
DELL-S4112F-ON (config) # license install box-id 1 key *****
DELL-S4112F-ON (config) # show license
```

## Device Show Commands (Traffic)

Use these show commands to monitor device traffic :

```
DELL-S4112F-ON (config) # show chassis
DELL-S4112F-ON (config) # show cards
DELL-S4112F-ON (config) # show port
```

## Device Status Show Commands (Environment)

Use these show commands to monitor the device environment:

```
DELL-S4112F-ON (config) # show environment
DELL-S4112F-ON (config) # show environment type psu
DELL-S4112F-ON (config) # show environment type temperature
DELL-S4112F-ON (config) # show environment type fan
DELL-S4112F-ON (config) # show environment type temperature threshold
DELL-S4112F-ON (config) # show environment psu-detail all
```

# Configuration Using H-VUE

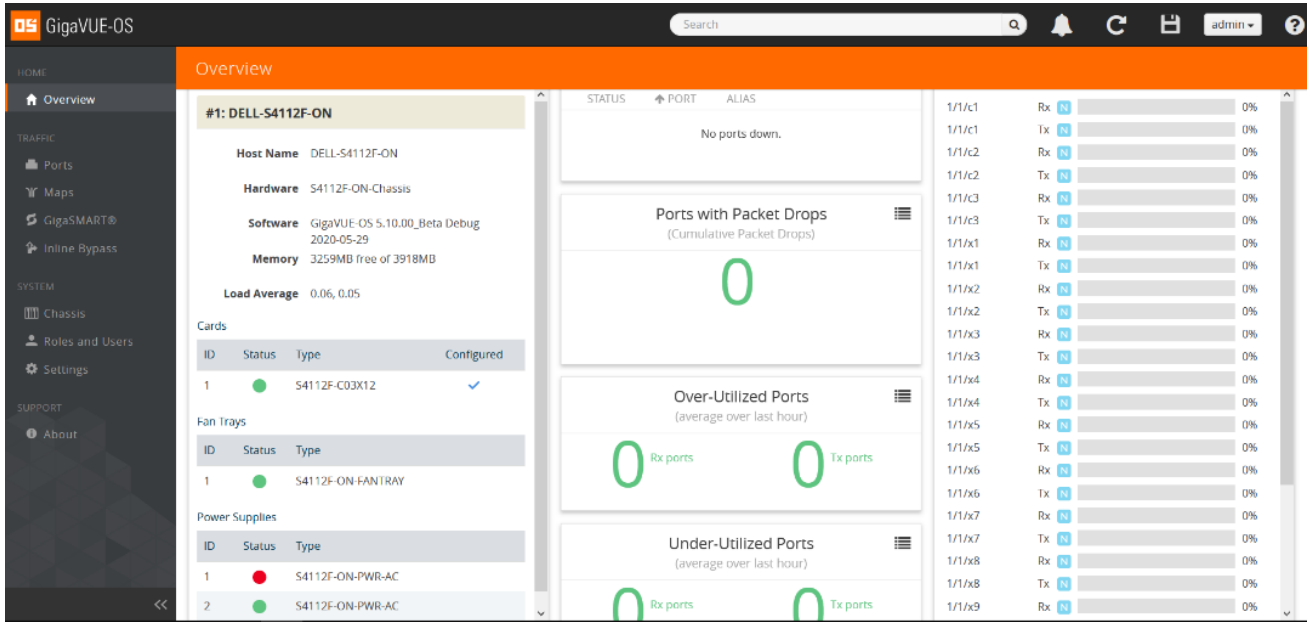
GigaVUE-OS provides a comprehensive graphical user interface (GUI) called H-VUE that can be used to manage the device in any browser without any hassle. Configure the device using CLI commands.

1. From the CLI interface, assign the IP address to the management (eth0) either using DHCP or Static IP.
2. Then, just enter the IP address in any browser and the GigaVUE-OS login page will appear.

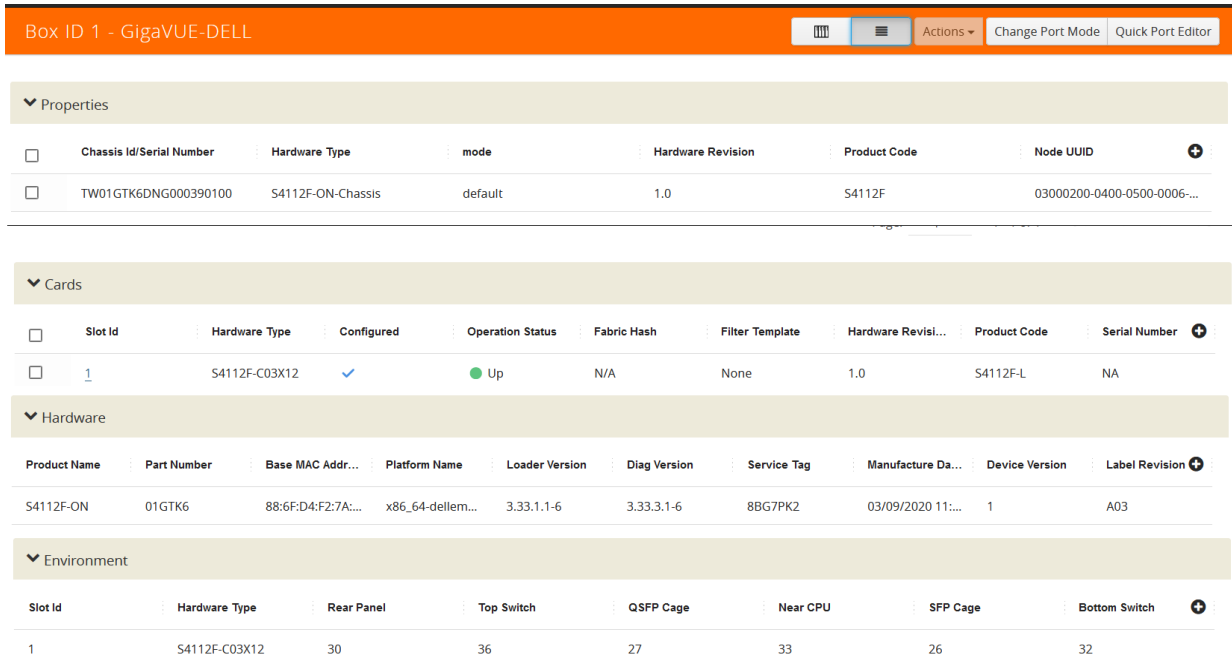


3. Provide your credentials and click Sign In.
4. After the credentials are authenticated, view Chassis details:
  - a. Click **Overview** from the left navigation pane to view the chassis' system information.

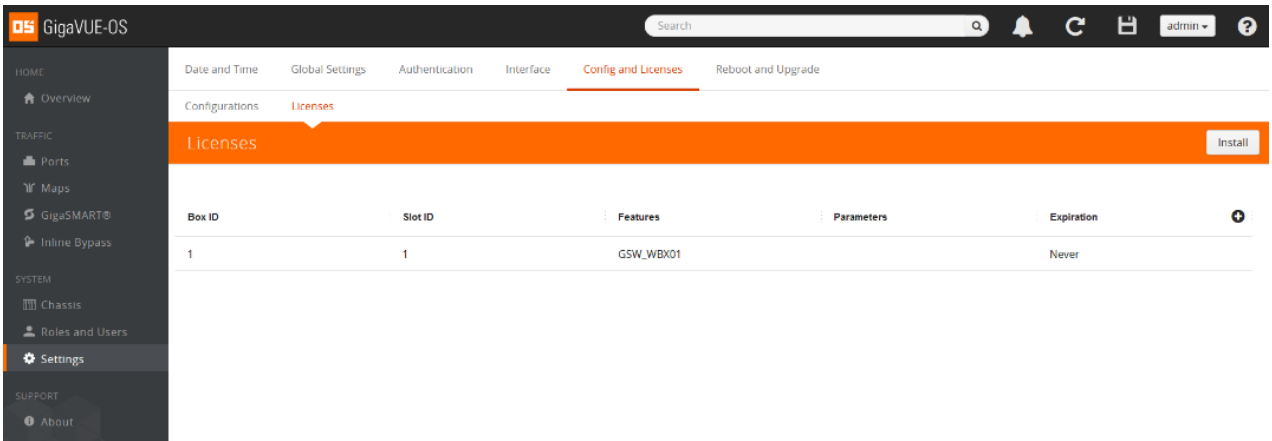




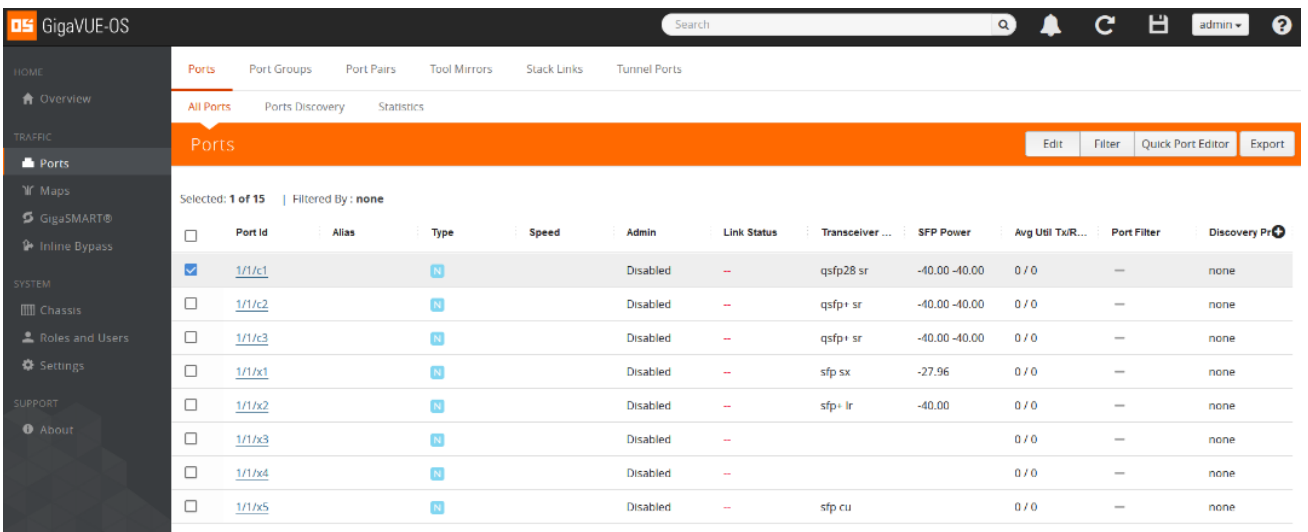
- b. Select **Chassis** from the left navigation pane and choose 'List View' to view the details of the chassis, line card, hardware, and environment.



- c. To activate the ports, ensure that you have installed the license.
5. Install your license:
    - a. From the GigaVUE-OS GUI, select **Settings** from the left navigation pane and click the Licenses tab.
    - b. From the Licenses page, click the **Install** button.



6. After the license is installed, select Ports to view all the port properties.
7. To edit port parameters, select the check box of the port you wish to edit and click the Edit button.



8. Enter the required port parameters.

Refer to "GigaVUE Administration Guide" to administer the GigaVUE-OS and GigaVUE-FM software.

## Supported Devices

The DELL S4112F-ON platform supports interoperability with GigaVUE-HC1, GigaVUE-HC2 (CCV1), GigaVUE-HC3 (CCv1,CCv2) GigaVUE-TA10, GigaVUE-TA40, GigaVUE-TA100 and GigaVUE-TA200 respectively .

# Supported Functionality

Once you install the required License for DELL S4112F-ON ,the features and functionalities that can be accessed are as follows:

Features	Description	Refer To
Web-Based or CLI based Management	Manage operations via a Web GUI or via CLI .	'GigaVUE Fabric Management' from GigaVUE-FM User's Guide 'Introducing the GigaVUE-OS CLI' from GigaVUE-OS-CLI Reference Guide
Scalable Port Density	Configure ports with pluggable transceivers 1Gb, 10Gb, 40Gb, 100Gb multi-mode and single-mode fiber. Compatible with SFP, SFP+, QSFP+ and QSFP28 MSA compliant transceivers as well.	<a href="#">GigaVUE-OS Compatibility and Interoperability Matrix</a>
Port Configurability	Allows you to be flexible in using the ports as ingress, intermediate, interconnect, egress functions ,unidirectional and bi-directional ports. Tunnel Termination by L2GRE or VXLAN is also available to access traffic over an IP network.	'About Ports' from GigaVUE-FM User's Guide
Flow Mapping	Allows you to direct traffic arriving on network ports to one or more tool ports based on different packet criteria, including VLAN IDs, IP addresses, port ranges, protocols, bit patterns, and so on. Filter traffic up to 4k map rule and load balancing from layers 2 to 4 hashing criteria.	'Flow Mapping' from GigaVUE-FM User's Guide
VLAN port tagging	Tags the point of source of traffic	'Ingress and Egress VLAN Tagging' from GigaVUE-FM User's Guide
Device and Link discovery with ARP and LLDP	Reduces time to install and configure GigaVUE nodes	'Manage Nodes and Clusters' from GigaVUE-FM User's Guide

Features	Description	Refer To
Clustering	Enables resilient traffic forwarding and manage up to 32 nodes in a cluster as a single virtual node. An advanced feature license is required to enable this functionality.	'Create and Manages Clusters' from GigaVUE-FM User's Guide
Fabric Maps	Enact end-to-end Flow Mapping, across clusters, scaling to hundreds of nodes. An advanced feature license is required to enable this functionality.	'About Fabric Maps' from GigaVUE-FM User's Guide
L2GRE/VXLAN	<ul style="list-style-type: none"> <li>• Tunnel Encapsulation-Back-haul across IP networks to central sites or cloud-based tools.</li> <li>• Tunnel Decapsulation-Facilitate traffic forwarding from cloud or virtual infrastructures</li> </ul> <p>An advanced feature license is required to enable this functionality.</p>	'Traffic Intelligence' from GigaVUE-FM User's Guide

# Limitations

The below given are few limitations as per current release when you access GigaVUE-OS on DELL S4112F-ON:

- DELL optics are not supported.
- VXLAN Header -Stripping is not supported.
- Interoperability with GigaVUE-TA25 platform is not supported.
- Stacking on 10G, 40G and 4x10G breakout ports is not supported.

## Troubleshoot Dell S4112F-ON Issues

This section lists issues related to DELL S4112F-ON and the steps to troubleshoot such issues. Refer to the following sections for details:

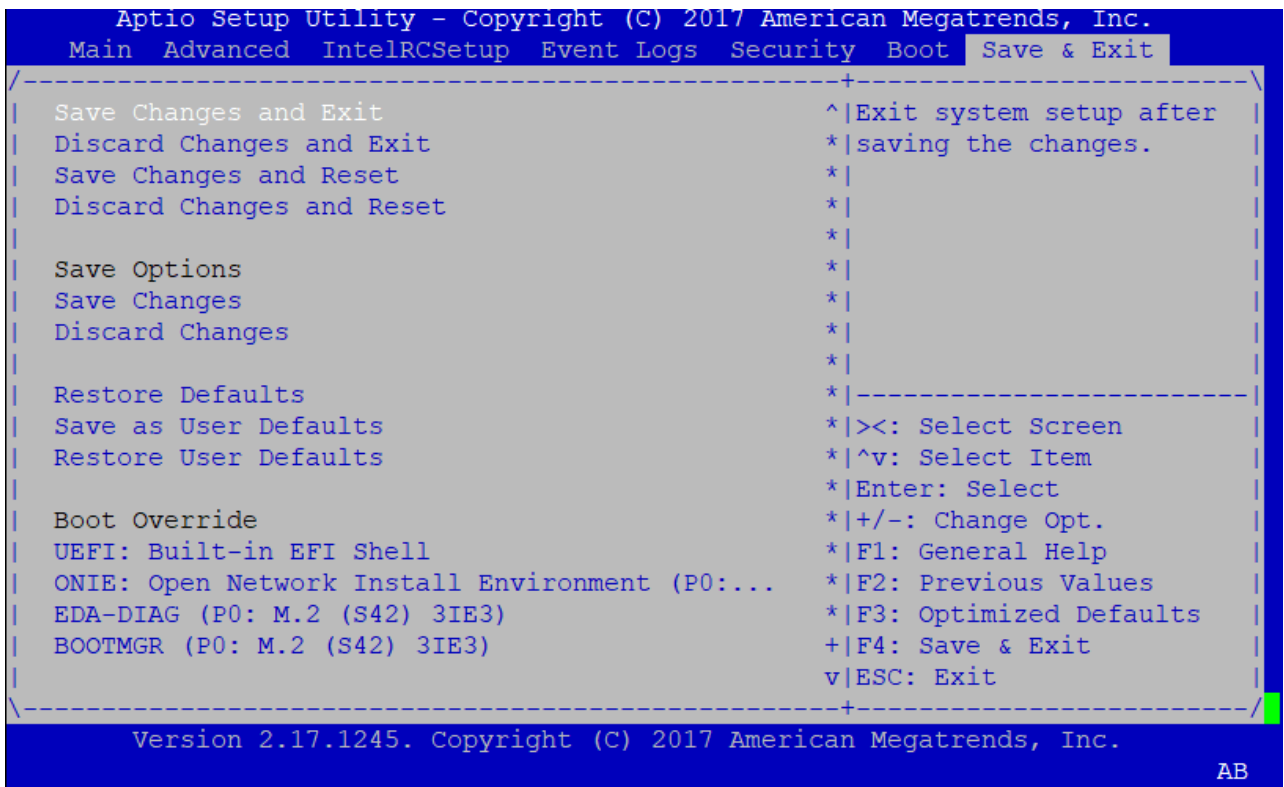
- DELL S4112F-ON enters GRUB Rescue Mode
- DELL S4112F-ON prevented from booting the GigaVUE-OS image

### DELL S4112F-ON enters GRUB Rescue Mode

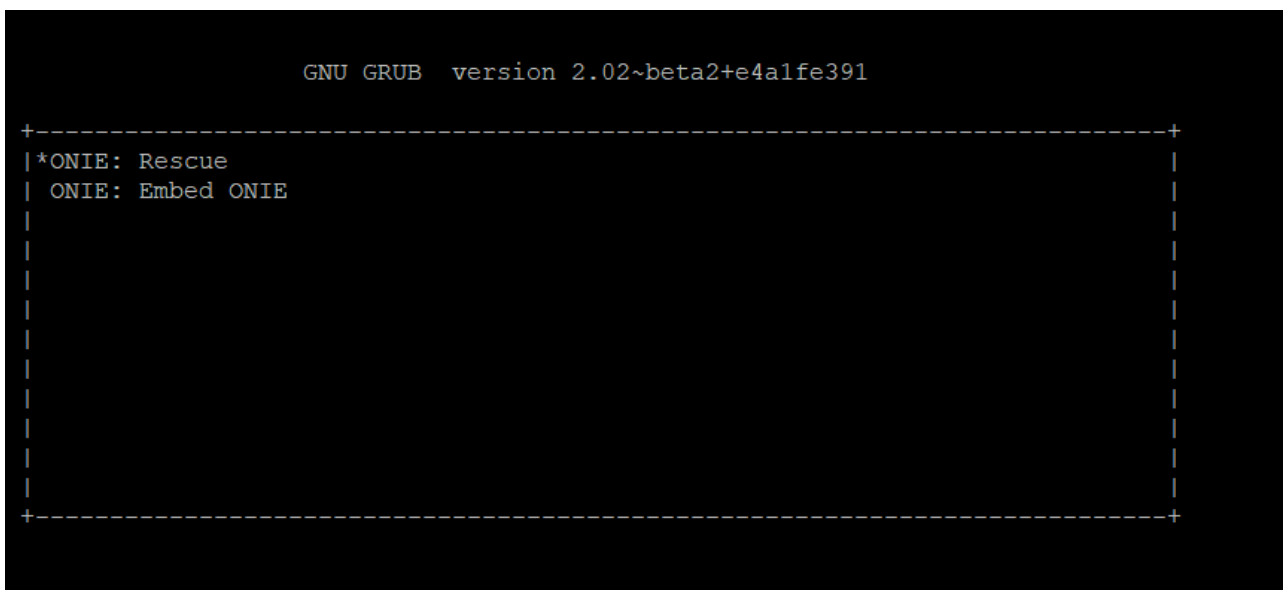
**Problem Description:** The DELL S4112F-ON enters in to a GRUB rescue mode due corrupted ONIE files.

**Corrective Action:** Perform the following tasks to troubleshoot the issue:

1. Plug-in a Golden USB, this is the bootable or recovery USB .
2. Power cycle the device.
3. Press **DELETE** when prompted and you will get the below 'Setup Utility' menu. Go to 'Boot Override' section and select the plugged in USB device then click on "Save Changes and Exit " and press **F4** key .
4. The system will now boot with the ISO image present in the USB and will enter into GRUB Menu with ONIE Rescue and Embed ONIE options.



5. Select "ONIE: Rescue" option from the below GRUB Menu. Once it is in Resume mode in ONIE prompt, reboot the device. This will mount the file system and assign an IP address using DHCP and then will enter "Rescue Mode".



6. Use the "^" and "v" key to select an entry. Press 'ENTER' to booth the selected OS , 'e' to edit the command before booting and 'c' for command-line.
7. The command lines for 'ONIE: Rescue' is as follows

```
ONIE: Rescue Mode ...  
  
Info: Using eth0 MAC address: 88:6f:d4:be:25:5d  
Info: eth0: Checking link... up.  
Info: Trying DHCPv4 on interface: eth0  
  
ONIE: Using DHCPv4 addr: eth0: 10.60.95.28 / 255.255.240.0  
  
Starting: dropbear ssh daemon... done.  
Starting: telnetd... done.  
discover: Rescue mode detected. Installer disabled.
```

8. Press 'ENTER' to activate the console. To check the install status use: `inspect /var/log/onie.log`.

```
** Rescue Mode Enabled **  
ONIE-RECOVERY:/ #  
ONIE-RECOVERY:/ # reboot
```

9. Once the system reboots and starts with GRUB Menu, Select "ONIE: EMBED" option from the GRUB menu. This will enable the device to get ONIE installed on `/dev/sda`, update the ONIE firmware and restart the system.

```
ONIE: Embedding ONIE ...  
Platform : x86_64-dellemc_s4100_c2338-r0  
Version : 3.33.1.1-7  
Build Date: 2018-08-09T11:43-0700  
Info: Mounting kernel filesystems... done.  
  
** ONIE Update Mode Enabled **  
  
ONIE-RECOVERY:/ # ONIE: Success: Firmware update URL: file:///lib/onie/onie-updater  
ONIE: Success: Firmware update version: 3.33.1.1-7  
ONIE: Rebooting...  
discover: ONIE embed mode detected.  
Stopping: discover...start-stop-daemon: warning: killing process 16332: No such process  
done.
```

10. Once the system reboots and starts with GRUB menu, install the GigaVUE-OS image.

**NOTE:** Remove the bootable USB before installing a GigaVUE-OS image.

## DELL S4112F-ON prevented from booting the GigaVUE-OS Image

**Problem Description:** Sometimes, after recovering the device from an issue ,the Golden USB or recovery USB is not removed . This can prevent the device from booting with GigaVUE-OS.

**Corrective Action:** Follow below steps to troubleshoot the issue:

1. To confirm the USB presence in the device, type "lsusb" from ONIE prompt, then the below highlighted 3rd partition will appear.

```
ONIE:/ # lsusb
Bus 001 Device 002: ID 8087:07db
Bus 001 Device 001: ID 1d6b:0002
Bus 001 Device 003: ID 0781:5567
ONIE:/ #
```

2. Remove the USB from the device and perform a reboot from ONIE prompt or power cycle the device.



## Additional Sources of Information

This appendix provides additional sources of information. Refer to the following sections for details:

- [Documentation](#)
- [Documentation Feedback](#)
- [Contact Technical Support](#)
- [Contact Sales](#)
- [The Gigamon Community](#)

### Documentation

The following table provides a list of the additional documentation provided for GigaVUE-OS H Series and TA Series nodes. "\*" indicates new documents in this release. "\*\*" indicates documents that are renamed in this release.



**NOTE:** Release Notes are not included in the online documentation. Registered Customers can download the Release Notes from the Software & Docs page on to [My Gigamon](#). Refer to [How to Download PDFs from My Gigamon](#).



**TIP:** If you keep all PDFs for a particular release in common folder, you can easily search across the doc set by opening one of the files in Acrobat and choosing **Edit > Advanced Search** from the menu. This opens an interface that allows you to select a directory and search across all PDFs in a folder.

Table 1: Documentation Suite for Gigamon Products

Summary	Document
<b>Hardware Installation Guides</b>	
<ul style="list-style-type: none"> <li>• how to unpack, assemble, rack-mount, connect, and initially configure the respective GigaVUE-OS devices</li> <li>• reference information and specifications for the respective GigaVUE-OS devices</li> </ul>	<b>G-TAP A Series 2 Installation Guide</b>
	<b>GigaVUE-HC1 Hardware Installation Guide</b>
	<b>GigaVUE-HC2 Hardware Installation Guide</b>
	<b>GigaVUE-HC3 Hardware Installation Guide</b>
	<b>GigaVUE TA Series Hardware Installation Guide</b>
<ul style="list-style-type: none"> <li>• how to install and configure ports with GigaVUE-OS on DELL S4112F-ON</li> </ul>	<b>GigaVUE-OS Installation Guide for DELL S4112F-ON</b>
<b>Software Installation and Upgrade Guides</b>	
<ul style="list-style-type: none"> <li>• how to install GigaVUE-FM on VMware ESXi, MS Hyper-V, and KVM</li> <li>• how to migrate GigaVUE-FM on VMware ESXi, Hardware Appliance, and AWS</li> </ul>	<b>**GigaVUE-FM Installation, Migration, and Upgrade Guide</b>
<ul style="list-style-type: none"> <li>• how to upgrade the embedded GigaVUE-OS on GigaVUE H Series and GigaVUE TA Series nodes</li> </ul>	<b>GigaVUE-OS Upgrade Guide</b>
<b>Administration Guide</b>	
<ul style="list-style-type: none"> <li>• how to administer the GigaVUE-OS and GigaVUE-FM software</li> </ul>	<b>GigaVUE-OS and GigaVUE-FM Administration Guide</b>
<b>Configuration and Monitoring Guides</b>	
<ul style="list-style-type: none"> <li>• how to install, deploy, and operate GigaVUE-OS</li> <li>• how to configure GigaSMART operations</li> </ul>	<b>GigaVUE-FM User's Guide</b>
<ul style="list-style-type: none"> <li>• how to deploy the GigaVUE Cloud Suite solution in any cloud platform</li> </ul>	<b>GigaVUE Cloud Suite for AnyCloud Configuration Guide</b>

Summary	Document
<ul style="list-style-type: none"> <li>how to configure the GigaVUE Cloud Suite components and set up traffic monitoring sessions for the respective cloud platform</li> </ul>	<b>GigaVUE Cloud Suite for AWS Configuration Guide</b>
	<b>GigaVUE Cloud Suite for AWS QuickStart Guide</b>
	<b>GigaVUE Cloud Suite for AWS SecretRegions Configuration Guide</b>
	<b>GigaVUE Cloud Suite for Azure Configuration Guide</b>
	<b>GigaVUE Cloud Suite for Kubernetes Configuration Guide</b>
	<b>GigaVUE Cloud Suite for Nutanix Configuration Guide</b>
	<b>GigaVUE Cloud Suite for OpenStack Configuration Guide</b> <b>GigaVUE Cloud Suite for VMware Configuration Guide</b>
<b>Reference Guides</b>	
<ul style="list-style-type: none"> <li>library of GigaVUE-OS CLI (Command Line Interface) commands used to configure and operate GigaVUE H Series and TA Series devices</li> </ul>	<b>GigaVUE-OS-CLI Reference Guide</b>
<ul style="list-style-type: none"> <li>guidelines for the different types of cables used to connect Gigamon devices</li> </ul>	<b>GigaVUE-OS Cabling Quick Reference Guide</b>
<ul style="list-style-type: none"> <li>compatibility information and interoperability requirements for Gigamon devices</li> </ul>	<b>GigaVUE-OS Compatibility and Interoperability Matrix</b>
<ul style="list-style-type: none"> <li>samples uses of the GigaVUE-FM Application Program Interfaces (APIs)</li> </ul>	<b>GigaVUE-FM REST API Reference in GigaVUE-FM User's Guide</b>
<b>Release Notes</b>	
<ul style="list-style-type: none"> <li>new features, resolved issues, and known issues in this release</li> <li>important notes regarding installing and upgrading to this release</li> </ul>	<b>GigaVUE-OS, GigaVUE-FM, GigaVUE-VM, and GigaVUE Cloud Suite Release Notes</b>
<b>In-Product Help</b>	
<ul style="list-style-type: none"> <li>how to install, deploy, and operate GigaVUE-OS. Provided from the GigaVUE-OS interface.</li> </ul>	<b>GigaVUE-FM Online Help</b>
<ul style="list-style-type: none"> <li>the web-based GUI for the GigaVUE-OS-OS. Provided from the GigaVUE-OS-OS H-VUE interface.</li> </ul>	<b>GigaVUE-OS H-VUE Online Help</b>

**NOTE:** Registered customers can log in to [My Gigamon](#) to download documentation for specific releases under Software & Documentation Downloads. Refer to [How to Download PDFs from My Gigamon](#).

## How to Download PDFs from My Gigamon

### To download release-specific PDFs:

1. Log in to [My Gigamon](#)
2. Click on the **Software & Documentation** link.
3. Use the **Product** and **Release** filters to find documentation for the current release. For example, select Product: "GigaVUE-FM" and Release: "5.7," enter "pdf" in the search box, and then click **GO** to view all PDF documentation for GigaVUE-FM 5.7.xx.

## Documentation Feedback

To send feedback and report issues in our documentation, complete the short survey at the following link:

<https://www.surveymonkey.com/r/gigamondocumentationfeedback>

## Contact Technical Support

See <https://www.gigamon.com/support-and-services/contact-support> for Technical Support hours and contact information. You can also email Technical Support at [support@gigamon.com](mailto:support@gigamon.com).

## Contact Sales

Use the following information to Gigamon channel partner or Gigamon sales representatives.

**Telephone:** +1.408.831.4025

**Sales:** [inside.sales@gigamon.com](mailto:inside.sales@gigamon.com)

**Partners:** [www.gigamon.com/partners.html](http://www.gigamon.com/partners.html)

## Premium Support

Email Gigamon at [inside.sales@gigamon.com](mailto:inside.sales@gigamon.com) for information on purchasing 24x7 Premium Support. Premium Support entitles you to round-the-clock phone support with a dedicated Support Engineer every day of the week.

## The Gigamon Community

The [Gigamon Community](#) is a technical site where Gigamon users, partners, security and network professionals and Gigamon employees come together to share knowledge and expertise, ask questions, build their network and learn about best practices for Gigamon products.

Visit the Gigamon Community site to:

- Find knowledge base articles and documentation
- Ask and answer questions and learn best practices from other members.
- Join special-interest groups to have focused collaboration around a technology, use-case, vertical market or beta release
- Take online learning lessons and tutorials to broaden your knowledge of Gigamon products.
- Submit and vote on feature enhancements and share product feedback. (Customers only)
- Open support tickets (Customers only)
- Download the latest product updates and documentation (Customers only)

The Gigamon Community is a great way to get answers fast, learn from experts and collaborate directly with other members around your areas of interest.

**Register today at** [community.gigamon.com](https://community.gigamon.com)

Questions? Contact our Community team at [community.gigamon.com](https://community.gigamon.com)